

# KATO

## MR-130R

### CITY CRANE



- 13.0t
- 26.0m boom
- 31.0m with off set fly jib

- Rubber tracks
- Load moment indicator system

- Climatised enclosed cabin
- Main & auxilliary winch systems
- 3.9m minimum turning radius

Safety, performance and versatility are some of the best attributes of the Kato MR-130R City Crane. Equipped with all-wheel steering designed for rough terrain and a modern, comfortable and air-conditioned operators cabin, this machine is designed for use in both in urban and rural settings.

# SPECIFICATIONS

# MR-130R CITYCRANE

## DIMENSIONS

Length	7440mm
Width	1995mm
Height	2845mm
Weight	13765kg

## CAPACITY

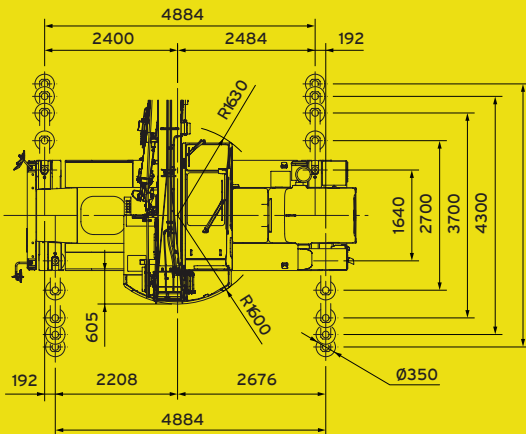
Max. capacity	13000kg at 1.7m
Max. working radius (main boom)	320kg at 22.5m
Max. working radius (fly jib)	260kg at 22.9m
Max. lifting height (main boom)	25.0m
Max. lifting height (fly jib)	30.0m

## TRACK

Width	1995mm
-------	--------

## MIN. TRANSPORT WIDTH

Overall Track	1995mm
Overall Unit	1995mm



## WORKING RANGE

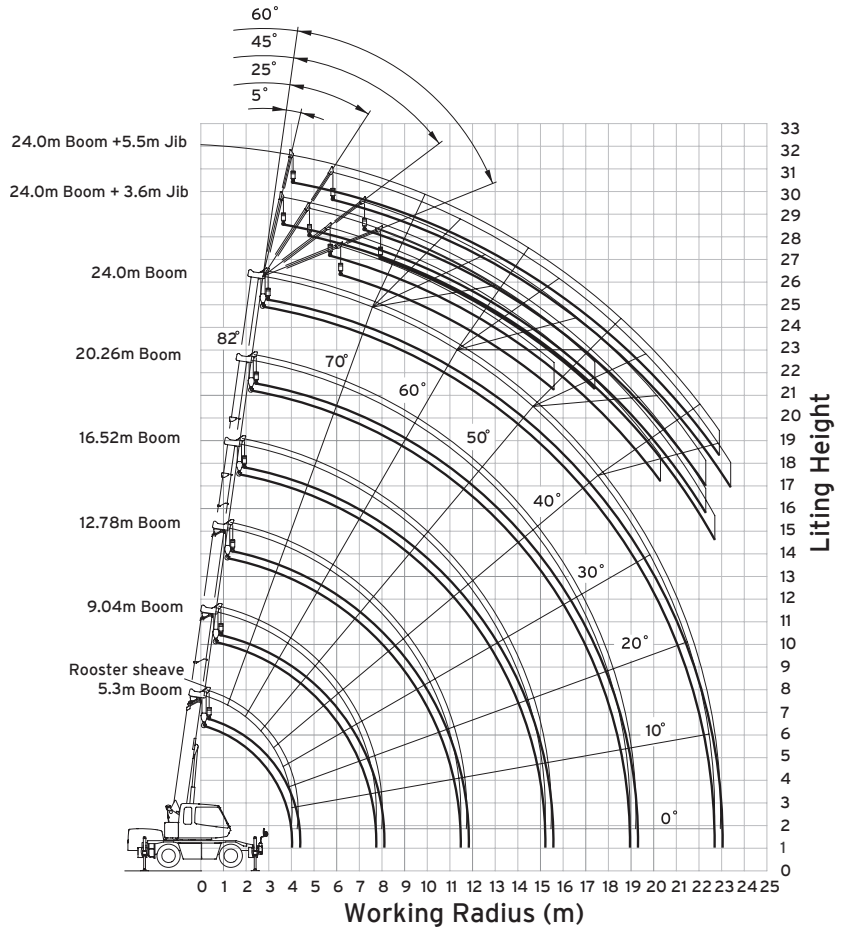
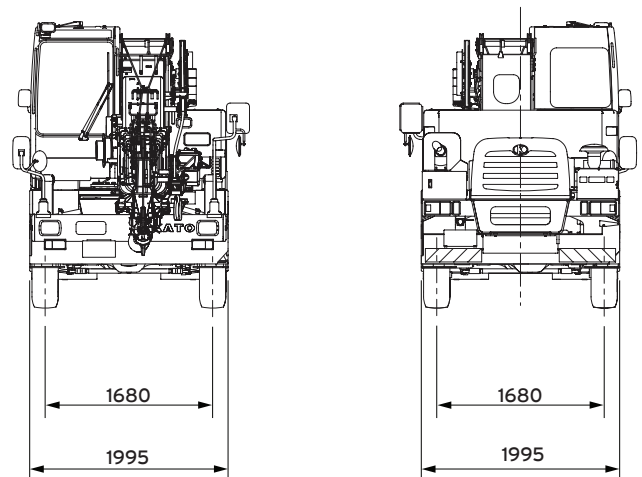


Diagram does not include deflection of boom and jib  
The outriggers are fully extended (360° full range).



COUNT ON US

1800 440 550 | [prestonhire.com.au](http://prestonhire.com.au)

# LOAD CHART

# MR-130R CITYCRANE

## LOAD CHART

### TOTAL RATED LOAD - OUTRIGGERS AT MAXIMUM POSITION

	5.3m Boom	9.04m Boom	12.78m Boom	16.52m Boom	20.26m Boom	24.0m Boom
Working Radius (m)	Total Rated Load (t)	Total Rated Load (t)	Total Rated Load (t)	Total Rated Load (t)	Total Rated Load (t)	Total Rated Load (t)
1.5	13.00	6.00	6.00			
1.7	13.00	6.00	6.00			
2.0	12.00	6.00	6.00	5.00		
2.5	10.00	6.00	6.00	5.00		
3.0	8.20	6.00	6.00	5.00	4.70	
3.5	7.00	6.00	6.00	5.00	4.70	3.20
4.0	6.10	6.00	6.00	5.00	4.70	3.20
4.5		5.50	5.40	5.00	4.50	3.20
5.0		5.00	4.90	4.60	4.05	3.20
5.5		4.50	4.40	4.20	3.70	3.20
6.0		4.10	4.00	3.80	3.40	3.00
6.5		3.70	3.65	3.50	3.15	2.80
7.0		3.35	3.30	3.20	2.90	2.60
8.0		2.70(7.7m)	2.90	2.70	2.50	2.25
9.0			2.25	2.30	2.20	1.95
10.0			1.80	2.05	1.95	1.75
11.0			1.45	1.70	1.75	1.55
12.0			1.35(11.4m)	1.40	1.50	1.40
13.0				1.15	1.30	1.25
14.0				0.95	1.10	1.15
15.0				0.80	0.90	1.00
16.0					0.79	0.85
17.0					0.68	0.74
18.0					0.58	0.64
19.0					0.51(18.8m)	0.55
20.0						0.47
21.0						0.41
22.0						0.35
22.5						0.32

The total rated load charts are based on the actual working radius including boom deflection.



COUNT ON US

1800 440 550 | [prestonhire.com.au](http://prestonhire.com.au)



## SPECIALISED EQUIPMENT HIRE SOLUTIONS

### Branch Locations

#### NSW/ACT

Unit 4, 4 Dupas Street,  
Smithfield, NSW 2164  
nswsales@prestonhire.com.au

#### NSW

56 Sandringham Place,  
Thornton, NSW, 2322  
nswsales@prestonhire.com.au

#### QLD

83 Parramatta Road,  
Underwood, QLD 4119  
qldsales@prestonhire.com.au

#### VIC/TAS

38 Sunline Dr,  
Truganina, VIC 3029  
vicsales@prestonhire.com.au

#### WA/NT

Unit 2,8 Hunt Street,  
Malaga, WA 6090  
wasales@prestonhire.com.au

#### SA

102 Cormack Road,  
Wingfield, SA 5013  
sasales@prestonhire.com.au

*\*Preston Hire available across Oceania*



COUNT ON US

1800 440 550 | [prestonhire.com.au](http://prestonhire.com.au)