

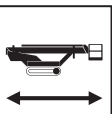
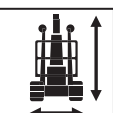
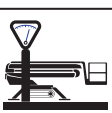
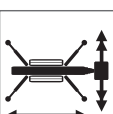

 22 m	 10,9 m
 250 kg	 max. 5,20 m min. 4,52 m
 0,94 m / 1,97 m	 3130kg
 4,0 m x 4,85 m	 HATZ Diesel Lithium Battery



The Bluelift 22.11 is great for larger jobs, offering a maximum vertical reach of 22m, plus an outreach of 11m even with two people in the basket. Variable leg placement comes standard, enabling the unit to be set up in a number of configurations, the narrowest being a leg stance of only 1985mm, which is ideal when units are deployed in driveways, walkways or between buildings.

At only 900mm wide and 1980mm high, the Bluelift spider lift 22.11 can be transported into most worksites with ease. A powerful Hatz diesel engine, auto levelling, wireless remote control and basket rotation are just some of the standard features that sets this spider lift apart from all others.

SPECIFICATIONS

BLUELIFT 22.11

SPECIFICATIONS

Working height, max.	22m
Horizontal outreach, max	10,9m/200kg
	9,9m/250kg
Basket capacity	250 kg
Basket dimension	1,3m x 0,7m x 1,1m
Turret rotation	340°
Overall weight	3130kg
Travel speed	1,5 km/h
Gradeability, max.	28%
Combustion engine	HATZ Diesel
Electric motor	Lithium Battery

STANDARD EQUIPMENT

- Quickly removable aluminum basket
- Basket rotation
- i-Performing electric pump (patented) with auto Start/Stop system
- 240V power outlet in basket
- Radio remote control with interactive and multi-lingual display
- Track width adjusting system with independent axle
- Multi-area stabilizer setting (3 different set-up positions)
- Moment limiting device
- Automatic center position of turret
- Self Stabilizing system
- Automatic START & STOP of engines and RPM control
- Proportional and simultaneous electro-hydraulic controls
- Proportional track drive with hydraulic breaking system
- Double drive speed system with safety control
- Driving Lateral slope alarm with safety stop
- Driving possible with jib boom raised (with selector)
- Interblock outriggers/booms
- Emergency push-button with engine stop
- Hand pump for the emergency lowering of platform
- Modem connection plug for diagnosis/software upgrading in remote
- Diesel engine HATZ
- Blue Lithium pack
- Asymmetric stability area
- Upper boom working angle - 20°
- Go-Home function

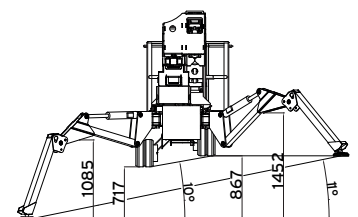
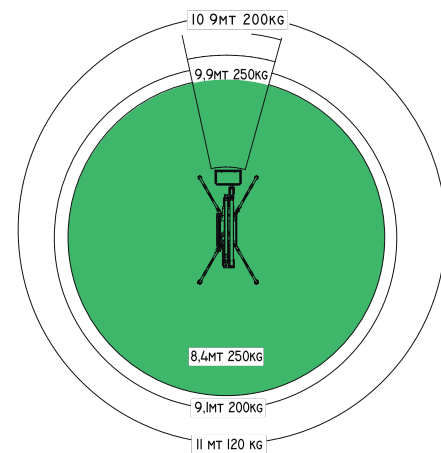
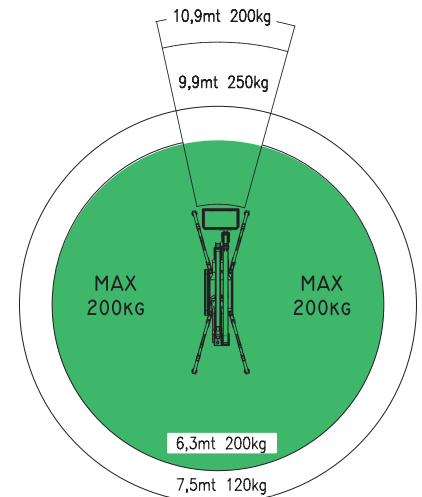
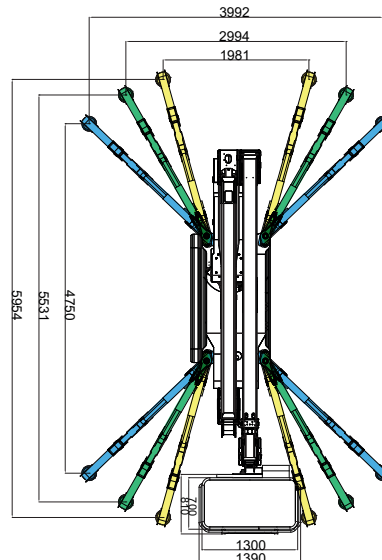
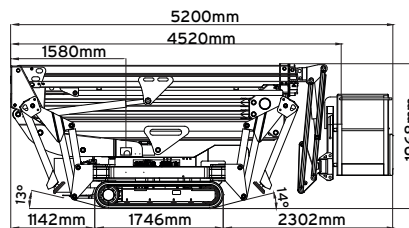
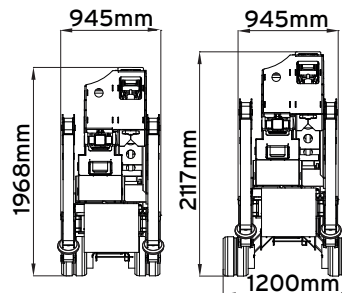
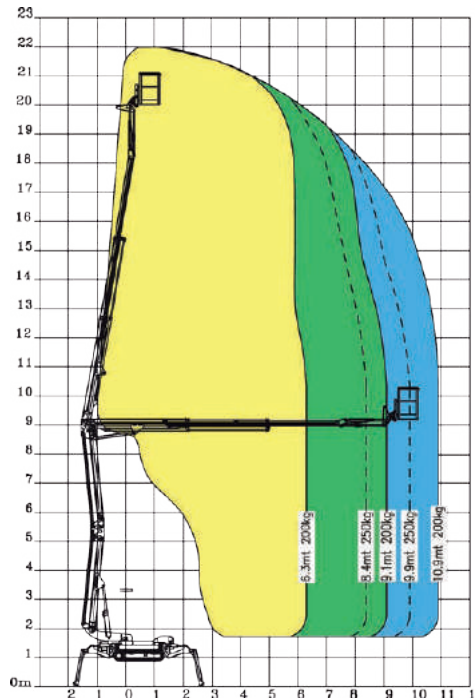
WEIGHT DISPERSIONS

Load on each footplate:

KG	KN
1998kg	19,59kN

Load on tracks:

Area Under Tracks	Weight Machine	PSI
1001,69 sq in	3130kg	6,82psi



COUNT ON US

1800 440 550 | prestonhire.com.au



SPECIALISED EQUIPMENT HIRE SOLUTIONS



Branch Locations

NSW/ACT

Unit 4, 4 Dupas Street,
Smithfield, NSW 2164
nswsales@prestonhire.com.au

NSW

56 Sandringham Place,
Thornton, NSW, 2322
nswsales@prestonhire.com.au

QLD

83 Parramatta Road,
Underwood, QLD 4119
qldsales@prestonhire.com.au

VIC/TAS

38 Sunline Dr,
Truganina, VIC 3029
vicsales@prestonhire.com.au

WA/NT

Unit 2,8 Hunt Street,
Malaga, WA 6090
wasales@prestonhire.com.au

SA

102 Cormack Road,
Wingfield, SA 5013
sasales@prestonhire.com.au

**Preston Hire available across Oceania*



COUNT ON US

1800 440 550 | prestonhire.com.au