

# SANY SY305H

- Isuzu GH-6HK1 Engine

- 31,500kg Operating Weight
- Rated Power 212kW/ 2000 rpm



The SANY SY305H works powerfully wherever maximum performance is required for excavation work and in civil engineering. The machine's high-quality technology and robust components form the basis for reliable and quick operation . Consider the possibilities...

# SPECIFICATIONS

## SANY SY305H

### ENGINE

Model	Isuzu GH-6HK1
Type	Water-cooled, 6 cylinder, with commonrail and Adblue
Exhaust emissions	Stage III
Rated power	212 kW / 2 000 rpm
Max. torque	1 080 Nm / 1 500 rpm
Displacement	7.79 L
Batteries	2 × 12 V / 120 Ah

### HYDRAULIC SYSTEM

Mainpump	2 x variable piston pump with electronic positive control
Max. oilflow	640 l/min
Travelmotor	Variable displacement axial piston motor
Swingmotor	Axial-piston motor
Max. oilflow (AUX1)	500 l/min

### RELIEF VALVE SETTINGS

Implement circuit	320 bar
Power boost	203 bar
Swing circuit	275 bar
Travel circuit	343 bar
Pilot pressure	39 bar

### SERVICE REFILL CAPACITIES

Fuel tank	540 l
Engine coolant	35 l
Engine oil	35 l
Drive (per side)	10,5 l
Adblue	85 l
Hydraulic oil tank	380 l

### PERFORMANCE

Swingspeed	9 rpm
Max. travel speed	High 5.2 km/h, slow 3.4 km/h
Max. travel force	245 kN
Gradeability	35°
Bucket capacity	1.4 - 1.7m <sup>3</sup>
Groundpressure	62 kPa
Bucket digging force ISO	220 kN
Arm digging force ISO	170 kN

### LIFTING CAPACITIES\*

Load point height	Radius				Max. digging reach		
	3.0 m	4.5 m	6.0 m	7.5 m	Capacity		mm
7.5 m kg					5796	5796	6954
6.0 m kg					7440	5592	5512 5308 7927
4.5 m kg					8777	8777	7857 5460 5478 4682 8525
3.0 m kg					13301	10813	10078 7211 8500 5270 5635 4368 8825
1.5 m kg					15494	10106	11268 6853 7696 5081 5736 4271 8860
Ground kg					16368	9767	11989 6615 7544 4941 5894 4373 8631
-1.5 m kg	12939	12939	16113	9688	10261	6514	7479 4882 6396 4727 8118
-3.0 m kg	20377	20377	14864	9777	11298	6547	8597 4940 7514 5520 7257
-4.5 m kg	16297	16297	12257	10032	9079	6748	8765 7468 5892

\* at 3 200 mm undercarriage width

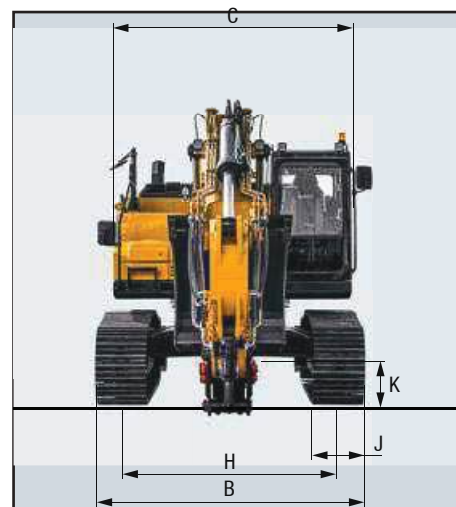
### UNDER AND UPPER STRUCTURE

Boom length	6 150 mm
Arm length	3 200 mm
Bottomrollers	9
Toprollers	2
Rotation device	Planetary gear reducer driven by an axial piston motor, automatic hydraulic released slewing brake

### OPERATING MASS

SY305H

31 500 kg



# SPECIFICATIONS

## SANY SY305H

### DIMENSIONS (TRANSPORT)

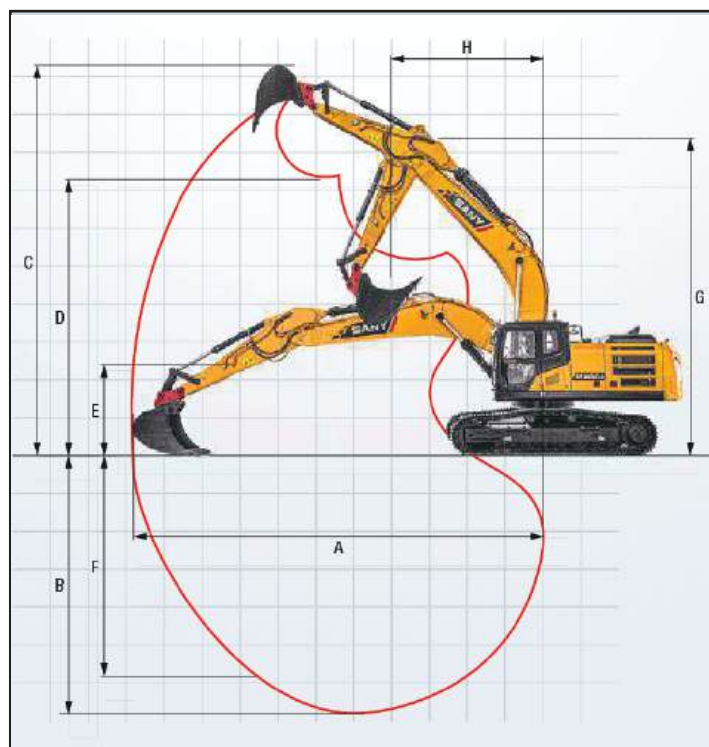
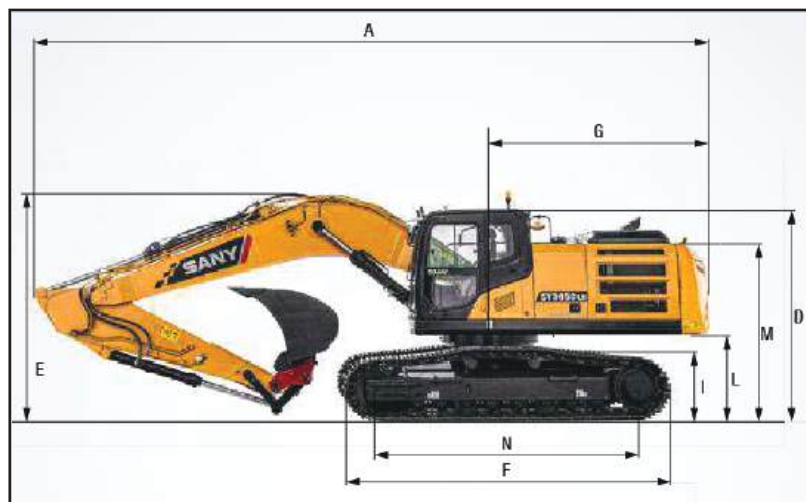
A	Transport length	10667 mm
B	Transport width	*2990 mm **3190 mm
C	Upperstructure carriage	2986 mm
D	Height over cabin/ROPS	3280 mm
E	Height of Boom – transport	3470 mm
F	Overall length of crawler	4840 mm
G	Tail length	3315 mm
H	Track gauge	*2390 mm **2590 mm
I	Track height	1025 mm
J	Track pads width	600 mm 700 mm 800 mm
K	Min. ground clearance	550 mm
L	Counterweight clearance	1045 mm
M	Engine cover height	2640 mm
N	Center distance of tumblers	3916 mm

\*at 600 mm track pads width

\*\*Wide undercarriage with 600 mm track pads width

### WORKING AREA

A	Max. digging reach	10870 mm
B	Max. digging depth	6815 mm
C	Max. digging height	10497 mm
D	Max. dumping height	7347 mm
E	Min. dumping height	2450 mm
F	Max. vertical digging depth	6170 mm
G	Overall height over arm by min. swing radius	8405 mm
H	Min. swing radius	4000 mm





# SPECIALISED EQUIPMENT HIRE SOLUTIONS

## Branch Locations

### NSW/ACT

25-39 Chadderton Street,  
Cabramatta NSW 2166  
nswsales@prestonhire.com.au

### NSW

56 Sandringham Place,  
Thornton, NSW, 2322  
nswsales@prestonhire.com.au

### QLD

83 Parramatta Road,  
Underwood, QLD 4119  
qldsales@prestonhire.com.au

### VIC/TAS

38 Sunline Dr,  
Truganina, VIC 3029  
vicsales@prestonhire.com.au

### WA/NT

Unit 2,8 Hunt Street,  
Malaga, WA 6090  
wasales@prestonhire.com.au

### SA

102 Cormack Road,  
Wingfield, SA 5013  
sasales@prestonhire.com.au

*\*Preston Hire available across Oceania*



COUNT ON US

1800 440 550 | [prestonhire.com.au](http://prestonhire.com.au)