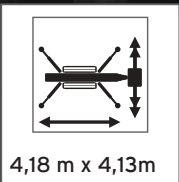
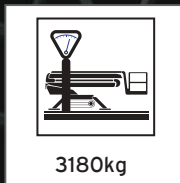
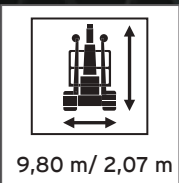
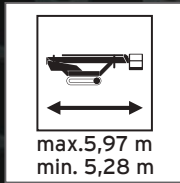
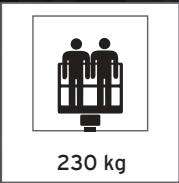
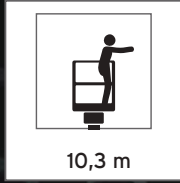


PRESTON HIRE

SUPERELEVATE™

PLATFORM BASKET 22.10



The Platform Basket 22.10 is the ideal solution for large job that require up and over capabilities. The double knuckle boom and adjustable fly jib provide exceptional working envelope maneuverability. The unit can rotate a full 360 degrees with the stabilizers set up in wide and narrow position's. The radio remote control enables driving, stabilization and boom functions to be operated from the basket or any other position. Weighing just over 3 tonne the 22.10 is well suited load critical surfaces. Additionally the removable 2 man basket and narrow track positioning allows doorway access.

PRESTON HIRE

COUNT ON US

1800 440 550 | prestonhire.com.au

SPECIFICATIONS

PLATFORM BASKET 22.10

DIMENSIONS

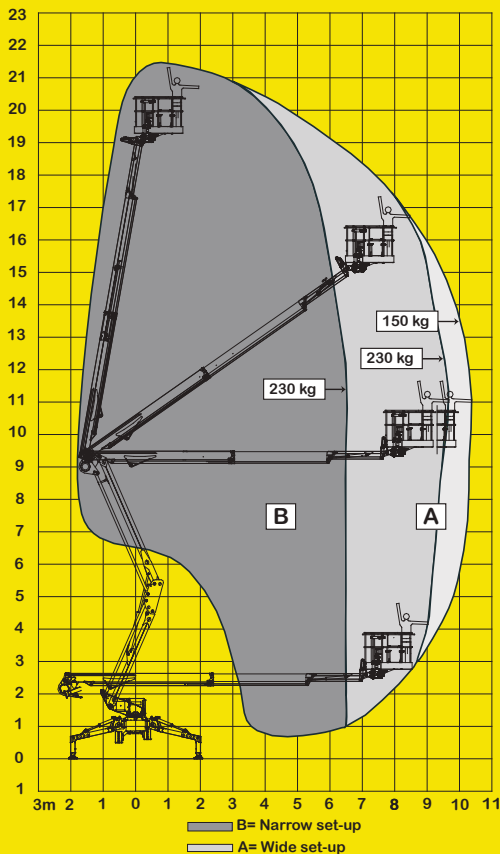
Length	5.98m
Transport Height	2.07m

REACH

Working Height	21.70m
Platform Height	19.70m
Horizontal Outreach	10.30m

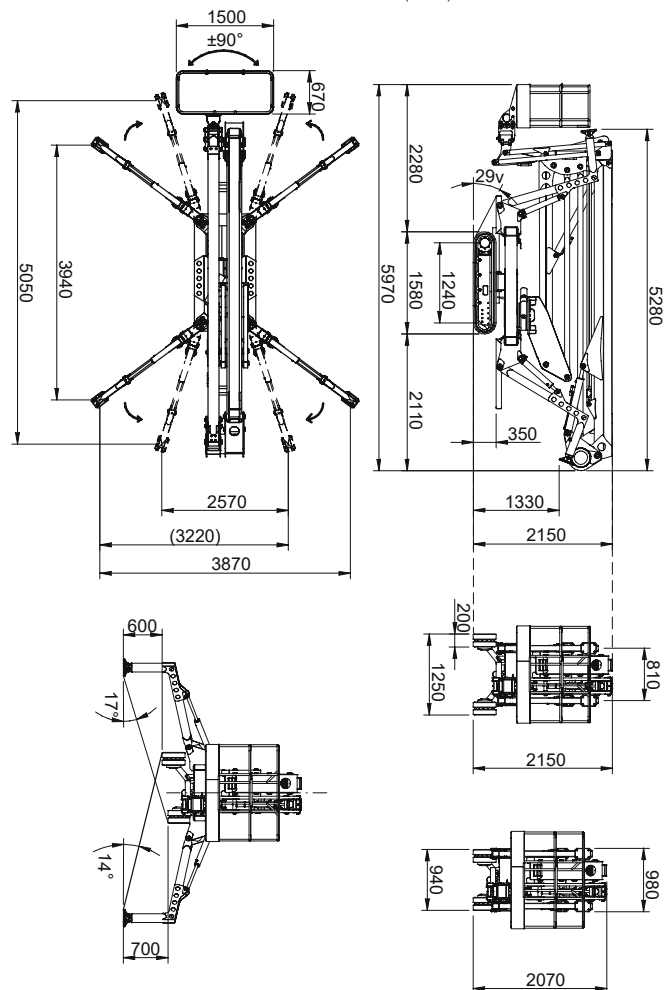
WORKING RANGE

Max Working Height (m)	21.70
Max Platform Height (m)	19.70
Max Horizontal Working Outreach (m)	10.30
Max Horizontal Outreach to edge of basket (m)	9.80
Lift Capacity / SWL (kg)	230
Weight / Outreach Limited (Yes/No)	Yes
Turret Rotation	365°
Basket Rotation	Up to 180°
Length with basket (m)	5.98
Length w/out basket (m)	5.28
Width stowed tracks (m)	0.98
Height (m) stowed	2.07
Basket Dimensions	1.5 x 0.7
Total Weight (kg)	3180
Max ground pressure driving (approx)	65 kN/m ²
Max stabilizer force	20 kN
Max stabilizer pressure with std foot pad	500kN/m ²
Gradeability length-wise	29% / 16 degrees
Gradeability sideways	27% / 15 degrees
Stabilizer set-up dimensions	4.184 x 4.139 o/o
Narrow set-up dimensions	5.318 x 2.806 o/o
Max slope for stabilizers	17 degrees
Stabilization system	Radio/auto
Standard Power Source/s	Kubota 14 HP Diesel & Battery System
Optional Power Sources (Hybrid model)	Kubota 14 HP Diesel & Battery System
Drive system	Tracks
Expanding tracks	Std
Drive speed km/h	2.5
2 Speed Drive	Yes
Remote drive control	Radio Std
Battery voltage - Kubota System	12
Basket load control	Std
Electric & Air outlets in basket	Std
Electric emergency lowering	Std



Complies with AS1418.10

(E & OE.)



COUNT ON US

1800 440 550 | prestonhire.com.au



SPECIALISED EQUIPMENT HIRE SOLUTIONS

Branch Locations

NSW/ACT

Unit 4, 4 Dupas Street,
Smithfield, NSW 2164
nswsales@prestonhire.com.au

NSW

56 Sandringham Place,
Thornton, NSW, 2322
nswsales@prestonhire.com.au

QLD

83 Parramatta Road,
Underwood, QLD 4119
qldsales@prestonhire.com.au

VIC/TAS

38 Sunline Dr,
Truganina, VIC 3029
vicsales@prestonhire.com.au

WA/NT

Unit 2,8 Hunt Street,
Malaga, WA 6090
wasales@prestonhire.com.au

SA

102 Cormack Road,
Wingfield, SA 5013
sasales@prestonhire.com.au

**Preston Hire available across Oceania*



COUNT ON US

1800 440 550 | prestonhire.com.au